

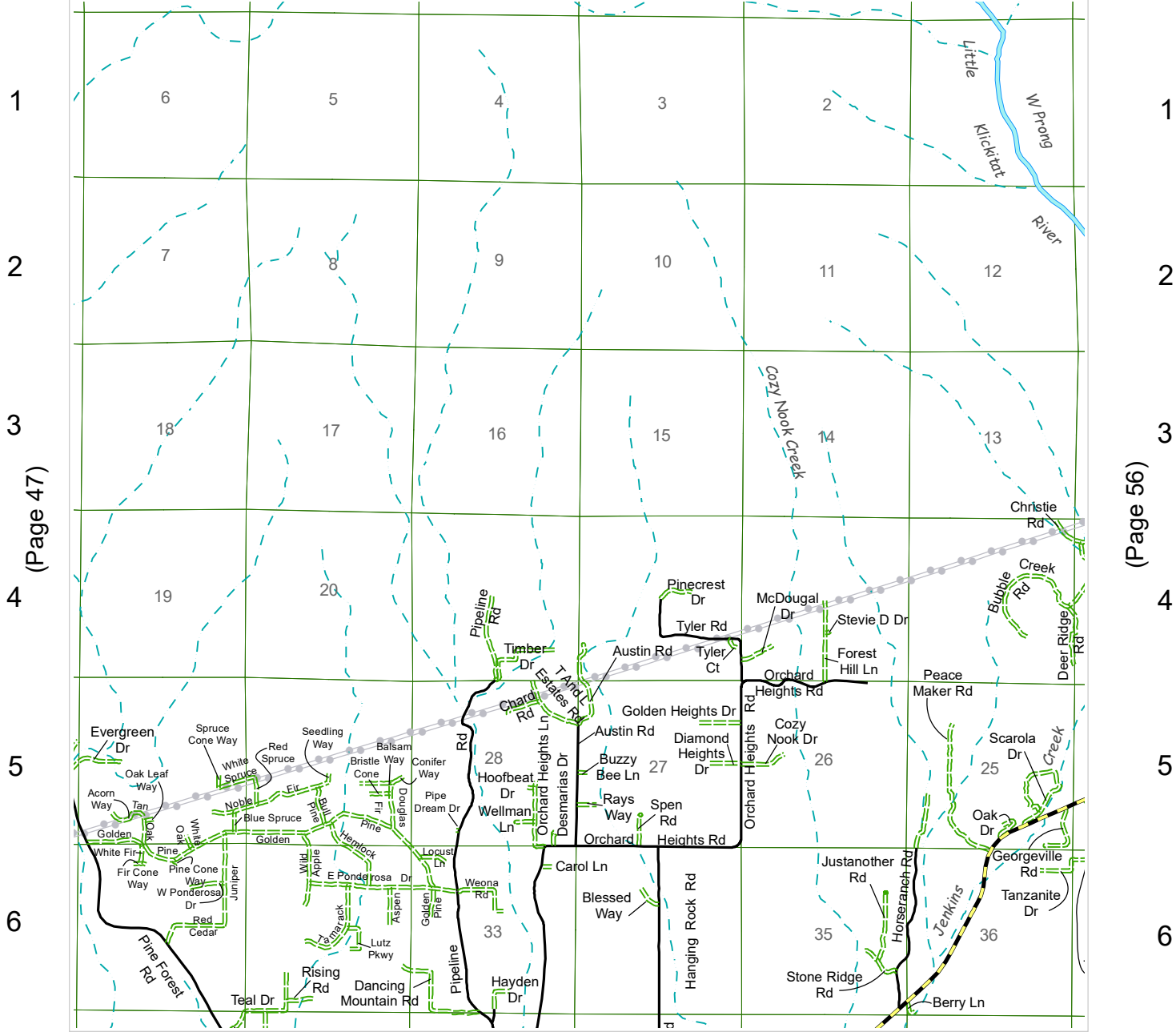
TOWNSHIP 5 NORTH, RANGE 16 EAST



- | | | | |
|--|-------------------|--|-----------------|
| | STATE | | CREEK |
| | COUNTY | | RIVER |
| | CITY | | RAILROAD |
| | PRIVATE | | BPA LINE |
| | OTHER GOVT | | |



A B C (Page 53) D E F



Page 47

Page 56

A B C D E F