

Legend

- Well finished only in Saddle Mountains Basalt
- ◆ Composite well tapping Saddle Mountains Basalt and underlying basalt unit
- Wells - monitored by Ecology (Hydrographs presented for labeled wells)
- Groundwater elevation (Spring 1983) contour (feet above MSL)
- ➔ Inferred groundwater flow direction
- Change in groundwater elevation (1983 -1985) contour (feet)
- ⊕ Extent of Saddle Mountains Basalt
- Watercourses (Ecology)
- ⊕ Waterbodies (Ecology)
- ⊕ Delineated Subbasins (Aspect Consulting)
- ⊕ Counties (WSDOT)

Data source for Spring 1983 contours:
Digitized from Bauer, Vaccaro & Lane (1985)
Data source for groundwater elevation change contours:
Digitized from Lane & Whiteman (1989)

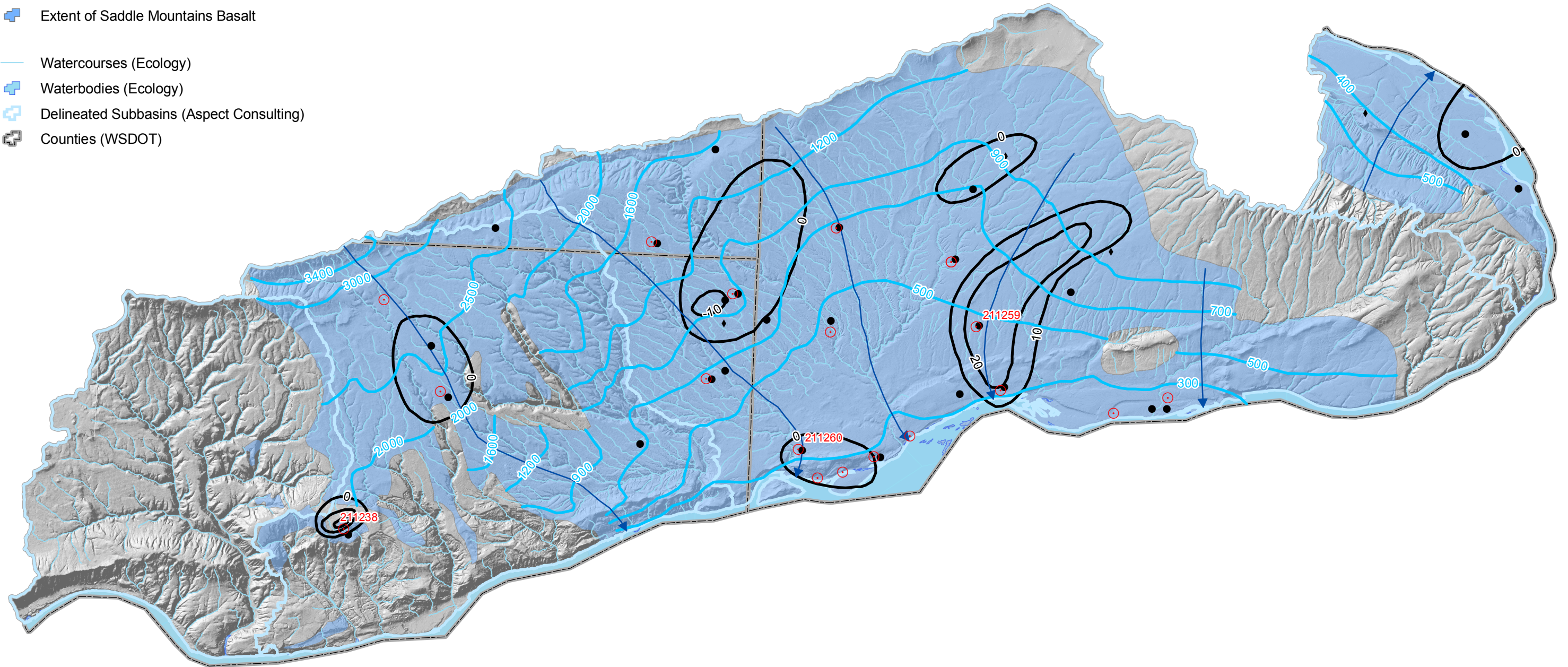
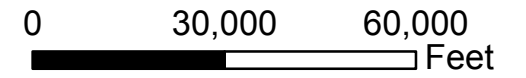


Figure 3-14
GROUNDWATER ELEVATIONS IN THE
SADDLE MOUNTAINS BASALT
WRIA31 Watershed Planning
Benton, Klickitat and Yakima Counties, WA



179 Madrone Lane North 811 First Avenue #480
Bainbridge Island, WA 98110 Seattle, WA 98104
(206) 780-9370 (206)-328-7443