

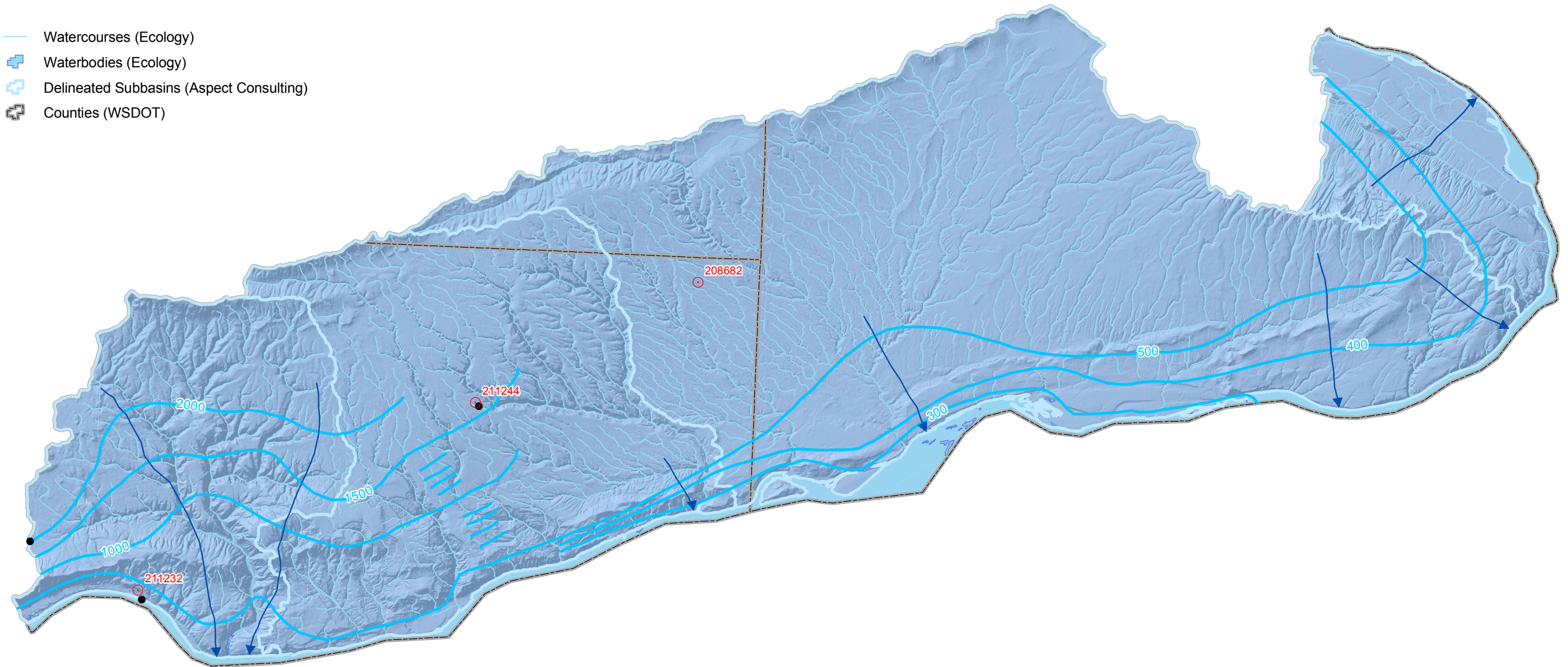
0 30,000 60,000 Feet



### Legend

- Well finished only in Grande Ronde Basalt
- Wells - monitored by Ecology (Hydrographs presented for labeled wells)
- Groundwater elevation (Spring 1983) contour (feet above MSL)
- ➔ Inferred groundwater flow direction
- ⊕ Extent of Grande Ronde Basalt
- Watercourses (Ecology)
- ⊕ Waterbodies (Ecology)
- ⊕ Delineated Subbasins (Aspect Consulting)
- ⊕ Counties (WSDOT)

Data source for Spring 1983 contours:  
Digitized from Bauer, Vaccaro & Lane (1985)



**Figure 3-12**  
**GROUNDWATER ELEVATIONS IN THE**  
**GRANDE RONDE BASALT**  
**WRIA31 Watershed Planning**  
**Benton, Klickitat and Yakima Counties, WA**



179 Madrone Lane North  
Bainbridge Island, WA 98110  
(206) 780-9370

811 First Avenue #480  
Seattle, WA 98104  
(206)-328-7443