

Public Water Supply Wells

- Finished in Saddle Mts Basalt
- Finished in Wanapum Basalt

Sampling Locations for this Study

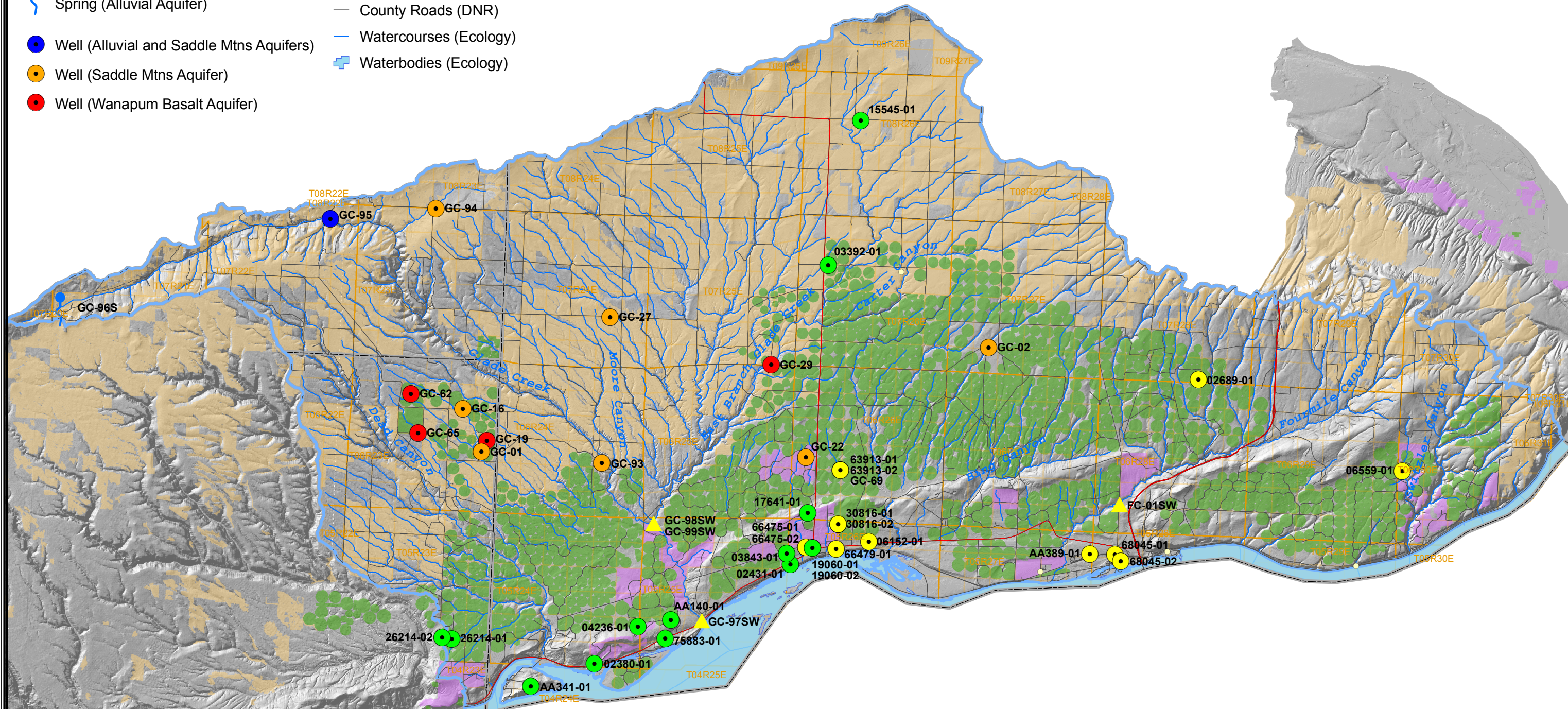
- ▲ Surface Water Sampling Location
- Spring (Alluvial Aquifer)
- Well (Alluvial and Saddle Mtns Aquifers)
- Well (Saddle Mtns Aquifer)
- Well (Wanapum Basalt Aquifer)

2001 Agricultural Cropland (IRZ Consulting, 2004)

- Dryland
- Irrigated - permanent crop
- Irrigated - seasonal crop
- Populated Places (WSDOT)
- State Routes (WSDOT)
- County Roads (DNR)
- Watercourses (Ecology)
- Waterbodies (Ecology)

Delineated Subbasins (Aspect Consulting)

- Counties (WSDOT)
- Township and Range (DNR)



Aspect consulting
IN-DEPTH PERSPECTIVE

179 Madrone Lane North
Bainbridge Island, WA 98110
(206) 780-9370

811 First Avenue #480
Seattle, WA 98104
(206)-328-7443

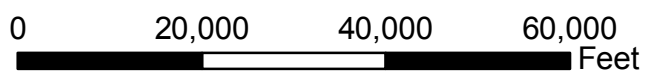


Figure 3
WATER QUALITY DATA LOCATIONS
GLADE/FOURMILE SUBBASIN
WRIA 31 Level 2 Water Quality Project