

Sample Locations

- GC-19 - Wanapum Basalt Well Identifier*
- <0.005 - Nitrates (mg/L) Fall 2004
- 0.01 - Nitrates (mg/L) Spring 2005

2001 Agricultural Cropland (IRZ Consulting, 2004)

- Dryland
- Irrigated - permanent crop
- Irrigated - seasonal crop
- Populated Places (WSDOT)

- State Routes (WSDOT)
- County Roads (DNR)

- Watercourses (Ecology)
- Waterbodies (Ecology)
- Delineated Subbasins (Aspect Consulting)
- Counties (WSDOT)
- Township and Range (DNR)

* If identifier begins with 'GC' then well was sampled by Aspect Consulting in the fall of 2004 and the spring of 2005 with both measurements presented, except as noted. For all other wells the single nitrate reading is from the latest available data.

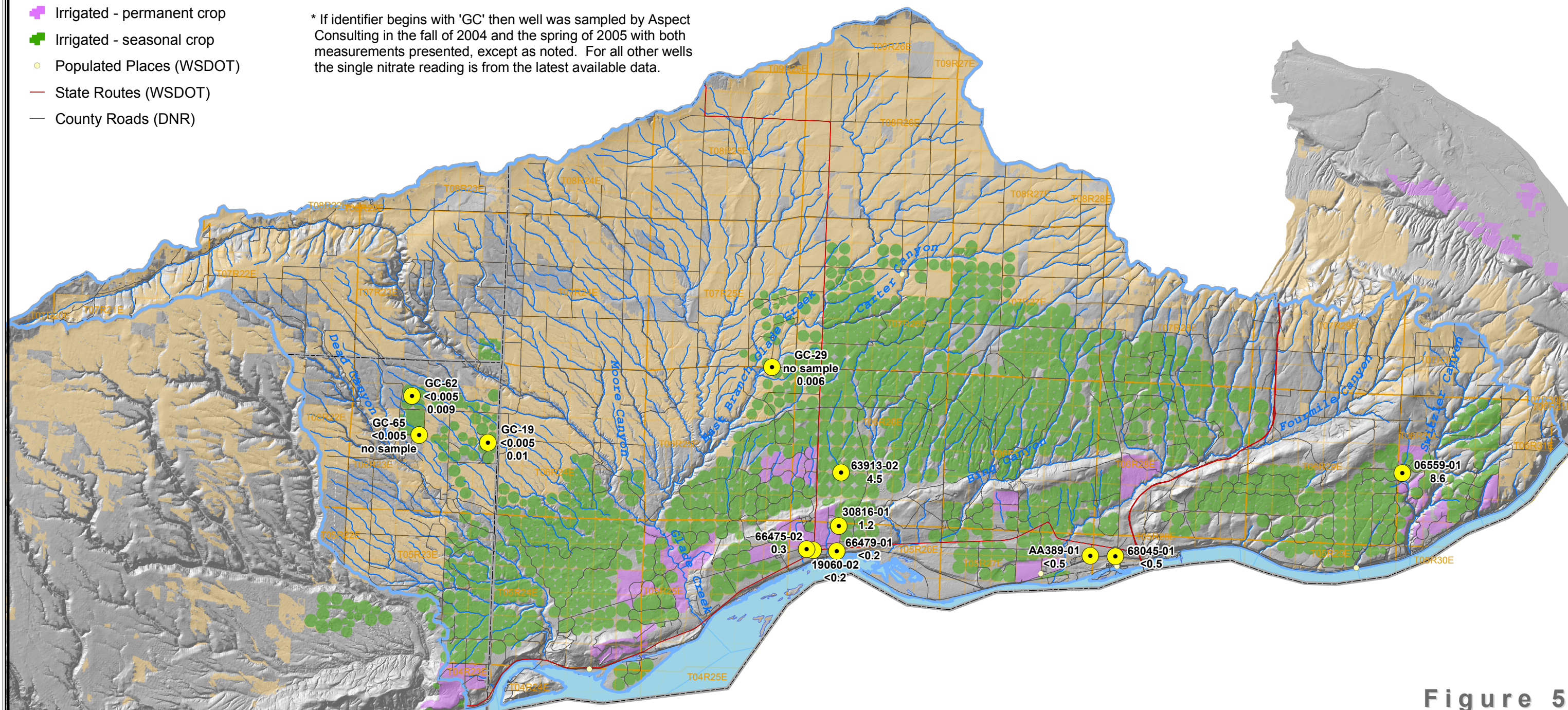


Figure 5
DISTRIBUTION OF NITRATE
IN WANAPUM AQUIFER
GLADE/FOURMILE SUBBASIN
WRIA 31 Level 2 Water Quality Project

